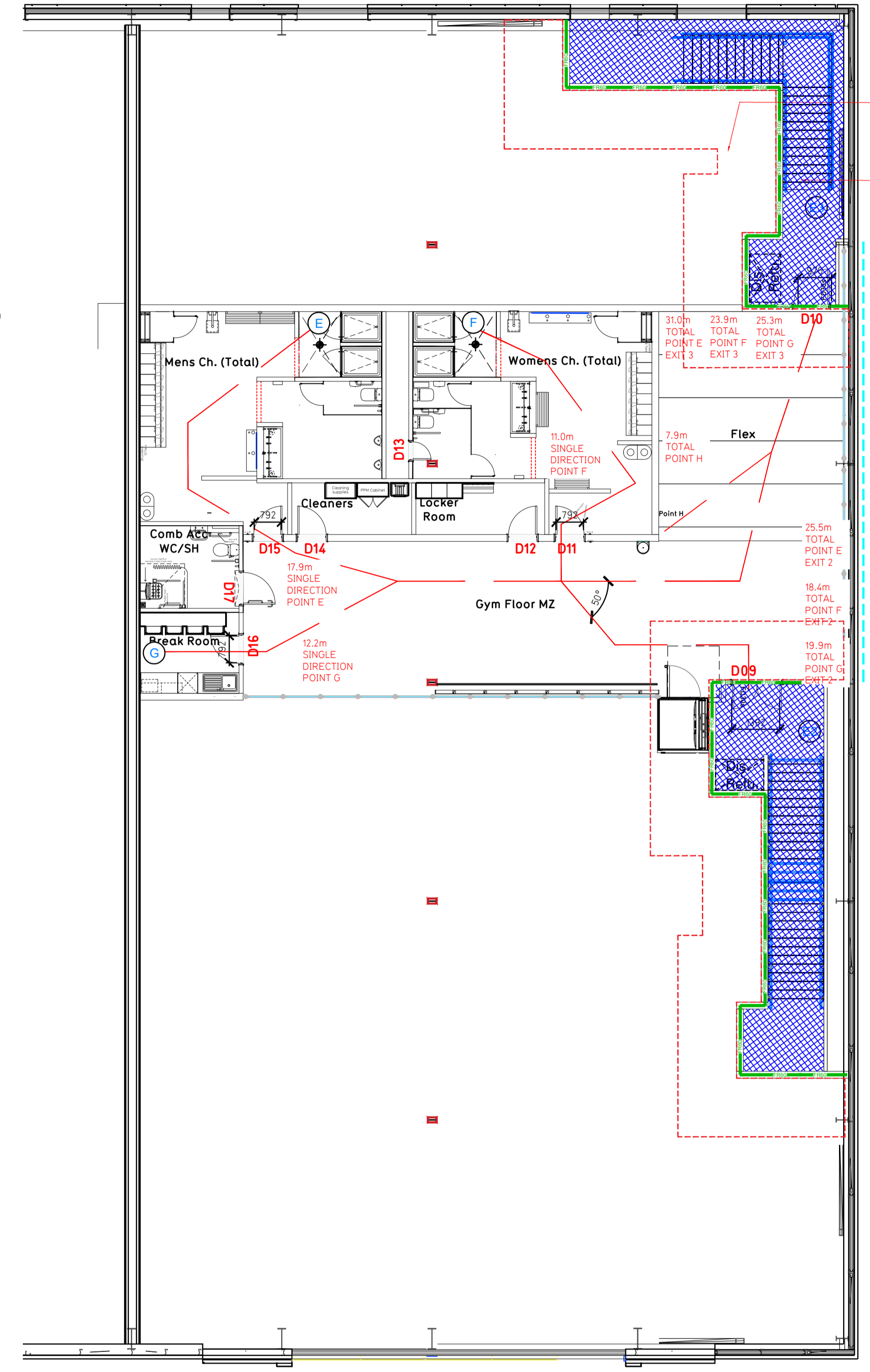
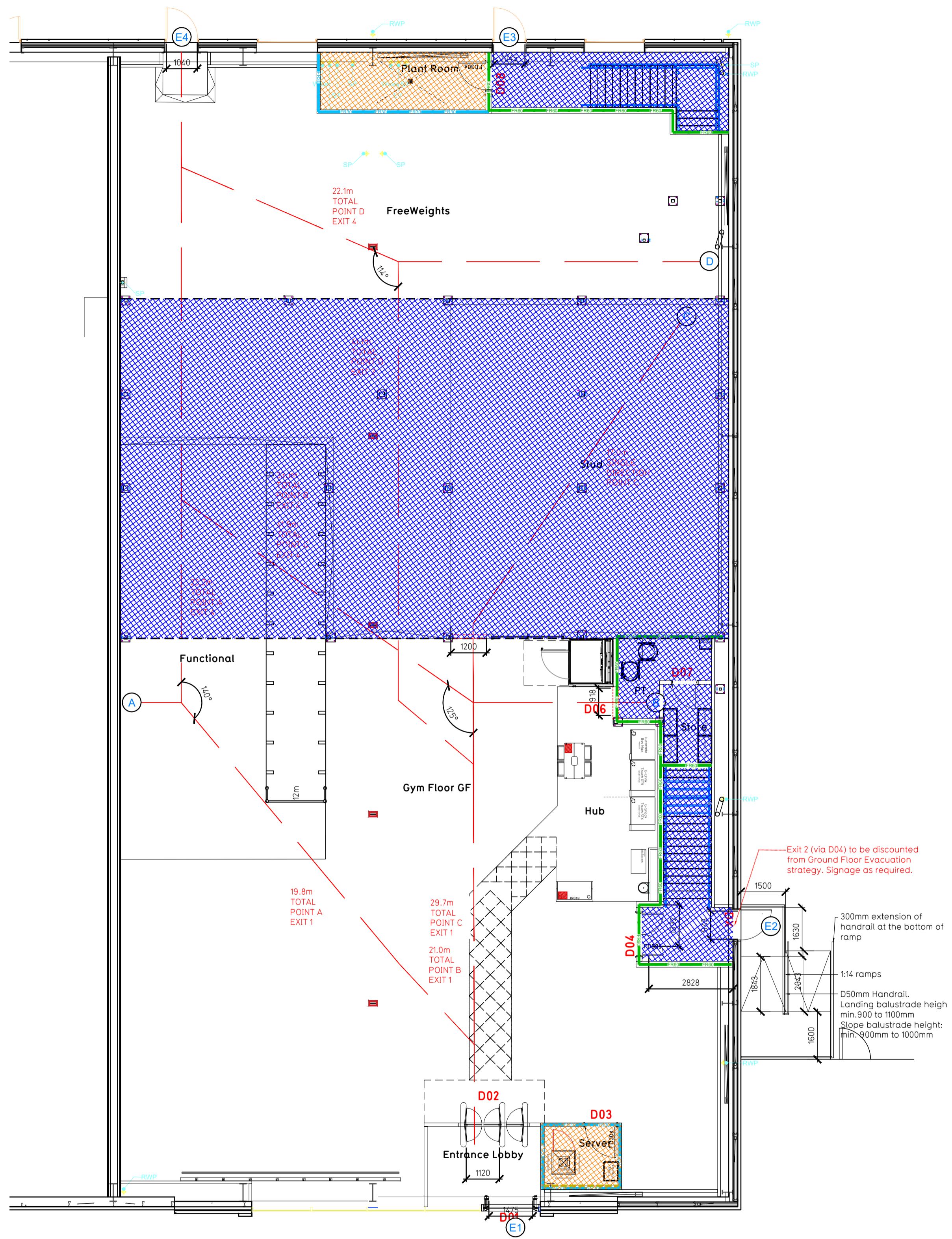


NOTE:

- Proposals must comply with all acoustic, fire & building regulation requirements
- No dimensions are to be scaled from this drawing. The contractor is responsible for checking all dimensions on site



Escape Route Widths:
In line with Sections 3.21 & 3.22 of 'Approved Document Part B, Volume 2 - buildings other than dwellings' - the adjacent calculations provide justification for the clear opening widths for escape from each floor level/ room in accordance with Table 4 & Appendix C.

Ground Floor
Exit 1 (restricted by SpeedGate) Clear Opening Width = 1120mm (allows 234 persons to escape)
Exit 4 Clear Opening Width = 1040mm (allows 110 persons to escape)

Mezzanine Floor
Exit 2 (restricted by D09) Clear Opening Width = 1392mm (allows 288 persons to escape)
Exit 3 (restricted by D10) Clear Opening Width = 970mm (allows 110 persons to escape)

Merging Flows
Merging Flow to be negated by restricting Ground Floor discharge to Exit 1 & Exit 4.

Conclusions
Ground Floor Total Estimated Occupancy Capacity = 110 Persons
Mezzanine Floor Total Estimated Occupancy Capacity = 110 Persons
Total Estimated Occupancy Capacity (considering Escape routes only) = 220 persons
Total Required Occupancy Capacity (considering Footprint Calculations) = 186 persons

This Evacuation plan is therefore thought to meet with the Approved Document Part B.

Fire Alarm
Fire Alarm designed and installed to BS 5839. Smoke & heat detection / emergency lighting by specialist. Please refer to M&E engineer's drawings / specifications.

Escape Lighting
Emergency escape lighting designed and installed in accordance with BS 5266: Part 1. Please refer to M&E Engineer's drawings for final layout and specification.

Fire Stopping
All perimeter edges of mezzanine to be appropriately fire stopped to create compartment floor and protect mezzanine structure. All services/drainage penetrations passing through fire rated compartment floor to be fire collared/sealed.

Escape Signage and emergency lighting is CDP under the M&E specification. Details of contractors proposals to be provided to Building Control Approved Inspector and Fire Officer within the Contractors Proposals Package, Clause 1.4

Fire Evacuation Key Existing Ground Floor Plan

	Existing wall to achieve min 30 minute fire rating (suitability of wall to be confirmed on site by Pure Gym Main Contractor)		Fire Escape Route
	Existing wall to achieve min 60 minute fire rating (suitability of wall to be confirmed on site by Pure Gym Main Contractor)		Minimum Clear Widths
	New wall to achieve min of 30min fire rating		Exit No.
	New wall to achieve min of 60min fire rating		Shared Escape Route
	Protected areas: walls, floors, ceilings and doors to achieve 30minute fire resistant construction.		Fire Door Rating
	Protected areas: walls, floors, ceilings and doors to achieve 60 minute fire resistant construction.		

Existing Mezzanine Plan

Rev	Date	Description	Drawn/Checked
<p>PROJECT TITLE: Bishop Auckland Unit 14/15, Auckland Leisure Scheme, DL14 9AH</p> <p>DRAWING TITLE: Fire Evacuation Plan Ground and First Floor Plans</p> <p>DRAWING NO: 003-FEP</p> <p>DATE: 22.02.24</p> <p>SCALE: 1:100 @ A1</p> <p>NO: 2369</p> <p>DRAWING PURPOSE: CONSTRUCTION</p>			
			<p>Pure Gym Ltd Town Centre House The Merlion Centre Leeds LS2 8LY</p> <p>e: architecture@puregym.com t: 0113 285 8787 w: www.puregym.com</p>