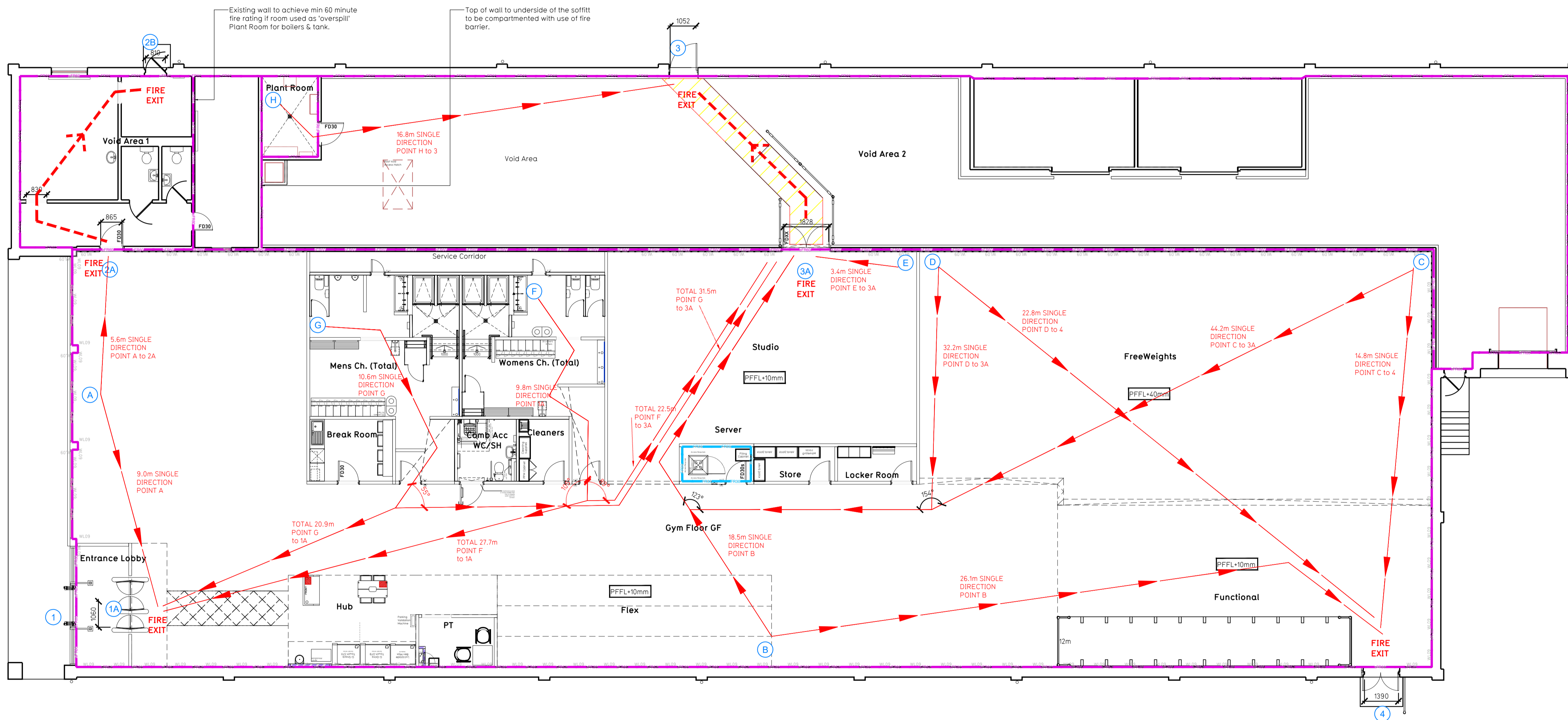
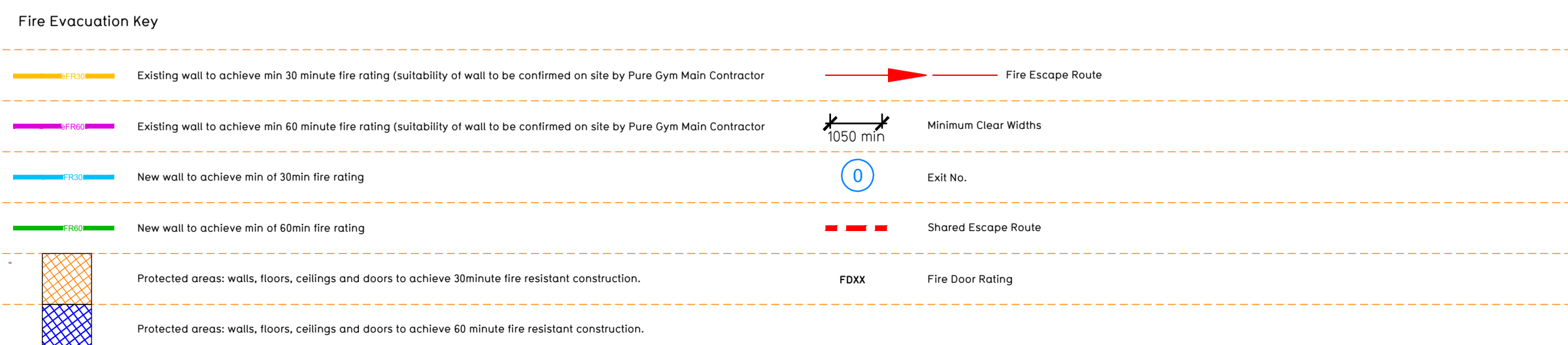


- NOTE:
- Proposals must comply with all acoustic, fire & building regulation requirements
  - No dimensions are to be scaled from this drawing. The contractor is responsible for checking all dimensions on site



Proposed Ground Floor Plan



**Escape Route Widths:**  
 In line with Sections 3.21 & 3.32 of 'Approved Document Part B, Volume 2 - buildings other than dwelling houses' - the adjacent calculations provide justification for the clear opening widths for escape from each floor level/room in accordance with Table 4 & Appendix C.

Exit 1 is restricted by 1A, Exit A Clear Opening Width = 1050mm (allows 272 persons to escape)  
 Exit 2 is restricted by 2B, Exit B Clear Opening Width = 810mm (allows 51 persons to escape)  
 Exit 3A is restricted by 3, Exit 3 Clear Opening Width = 1057mm (allows 270 persons to escape)  
 Exit 4 Clear Opening Width = 1350mm (allows 268 persons to escape, largest opening to be discounted)  
 Total Aggregate Width for Floor (Less Largest Opening Width of 1350mm from Exit 4 = 2377mm)

**Total = 502 persons to escape**

Based on a NIA of 10,021 sqm, the Puregym Peak Occupancy Target = 186 Persons  
 Calculated using Puregym Fire Safety Occupancy Levels Forecast Tool.  
 The designed occupancy of the unit as calculated below would allow a max. No. of 502 persons to escape, which is larger than the total estimated occupancy capacity of 186 Persons and is therefore thought to meet with the Approved Document Part B.

**Fire Alarm**  
 Fire Alarm designed and installed to BS 5839. Smoke & heat detection / emergency lighting by specialist. Please refer to MSE engineer's drawings / specifications.

**Escape Lighting**  
 Emergency escape lighting designed and installed in accordance with BS 5266: Part 1. Please refer to MSE Engineer's drawings for final layout and specification.

**Fire Stopping**  
 All perimeter edges of mezzanine to be appropriately fire stopped to create compartment floor and protect mezzanine structure. All services/drainage penetrations passing through fire rated compartment floor to be fire collared/sealed.

Escape Signage and emergency lighting is CDP under the MSE specification. Details of contractors proposals to be provided to Building Control Approved Inspector and Fire Officer within the Contractors Proposals Package, Clause 14.

Rev	Date	Description	Drawn/Checked
C03	07.02.24	Void area 01: external door opening retained as existing, wall between void area 1 and 2, complementation note added. Also refer to FG reflected ceiling plan for further detail.	MJI/JM
C02	05.01.24	Nibs added to sinks.	SKI/JM
C01	21.12.23	Updated for potential 'overspill' Plant Room.	SKI/JM
PROJECT TITLE: <b>SELBY 3 Lakes Retail Park, Selby YO8 8LY</b> DRAWING TITLE: <b>Fire Evacuation Plan Ground Floor Plan</b>			
SK/JM	06.12.23	1:100 @ A1	2148
003-FEP			
DRAWING PURPOSE: <b>CONSTRUCTION - query draft</b>			Rev
			C03
			Pure Gym Ltd Town Centre House The Merrion Centre Leeds LS2 8LY e: architecture@puregym.com t: 0113 285 8787 w: www.puregym.com