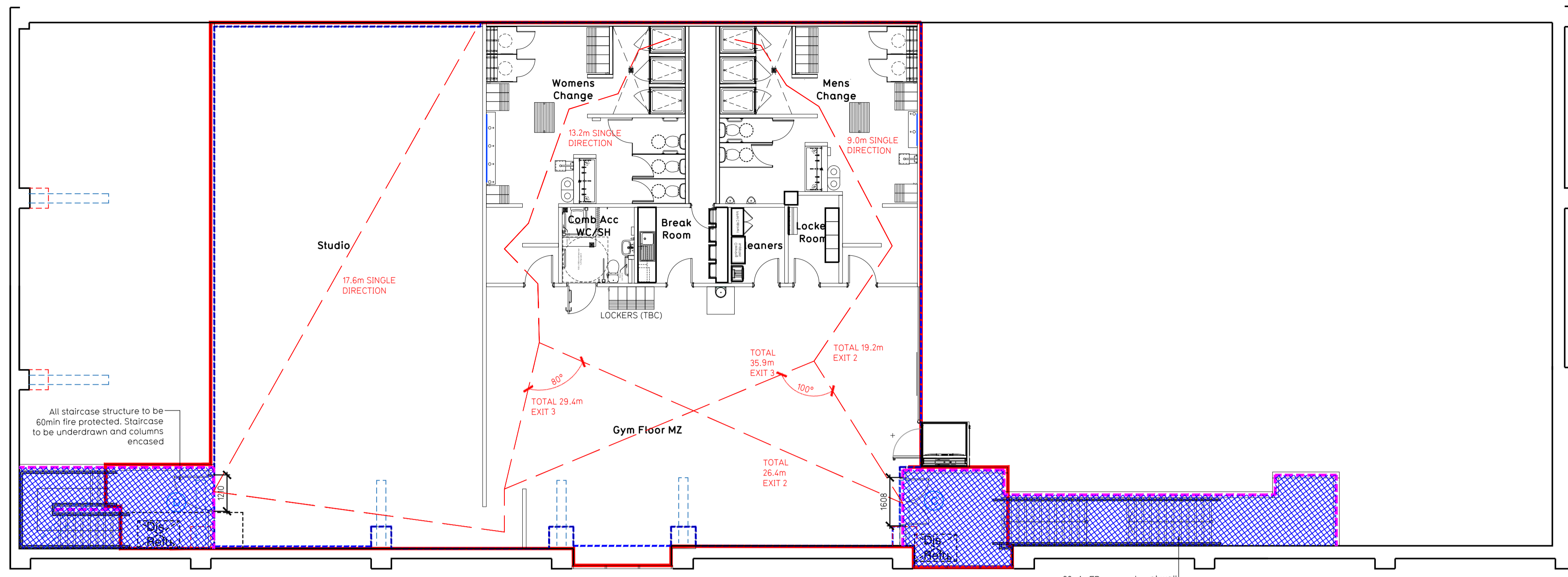


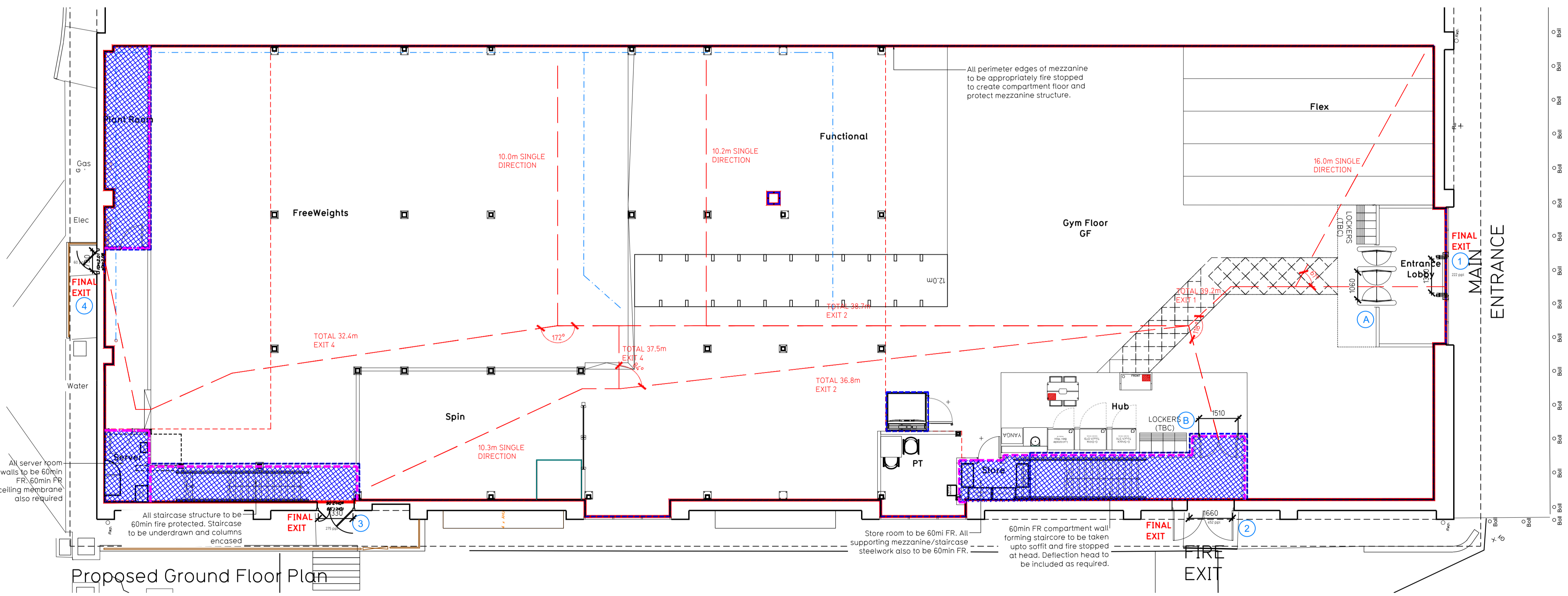
NOTE:

- Proposals must comply with all acoustic, fire & building regulation requirements
- No dimensions are to be scaled from this drawing. The contractor is responsible for checking all dimensions on site



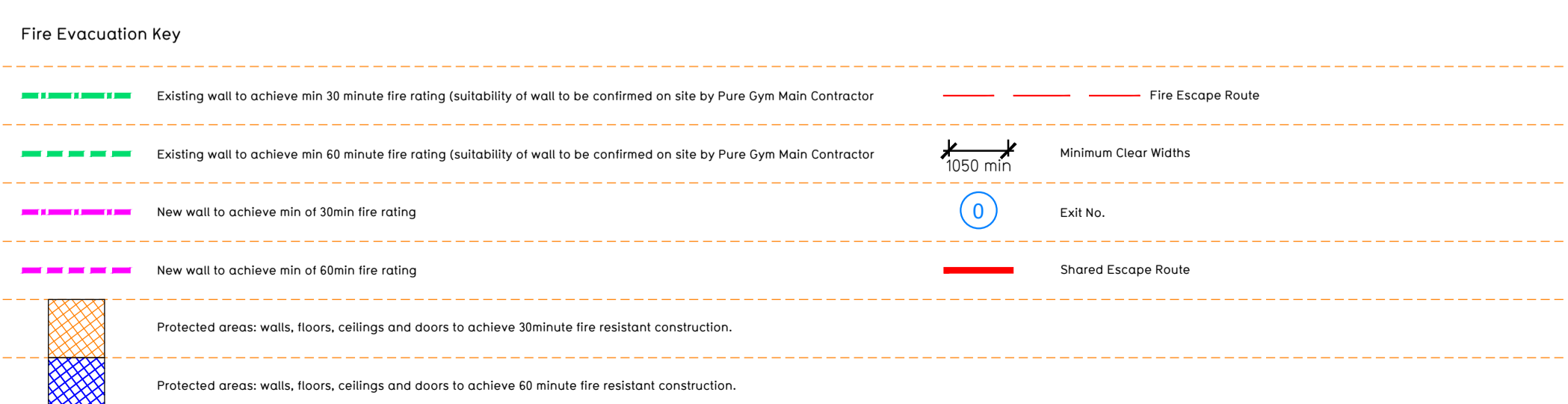
Proposed Mezzanine Floor Plan

60min FR compartment wall forming staircase to be taken upto soffit and fire stopped at head. Deflection head to be included as required.



Proposed Ground Floor Plan

Store room to be 60mi FR. All supporting mezzanine/staircase steelwork also to be 60min FR.



Calculated using Puregym Fire Safety Occupancy Levels Forecast Tool.

The designed occupancy of the unit as calculated would allow a max. No. of 80 persons, which is larger than the total estimated occupancy target of 254 persons and is therefore thought to meet with the Approved Document Part B. To allow free movement between the floors the occupancy has not been split 50/50% but rather allows for occupancy based on gym stations and function assuming that a high percentage of the total occupancy could be on a single floor at one time.

Ground Floor
 Final Exit 1 limited by Storey Exit A Clear Opening Width = 1060mm (allows 222 persons to escape)
 Final Exit 2 limited by Storey Exit B Clear Opening Width = 1510mm (allows 302 persons to escape, largest opening to be discounted)
 Final Exit 3 Clear Opening Width = 1330mm (allows 178 persons to escape)
 Final Exit 4 Clear Opening Width = 790mm (allows 61 persons to escape)
 Total Aggregate Width for Floor (Less Largest Opening Width of 1510mm from Final Exit 2) = 3180mm

Mezzanine Floor
 Final Exit 1 limited by Storey Exit C Clear Opening Width = 1608mm (allows 332 persons to escape, largest opening to be discounted)
 Final Exit 3 limited by Storey Exit D Clear Opening Width = 1100mm (allows 152 persons to escape)
 Total Aggregate Width for Floor (Less Largest Opening Width of 1608mm from Final Exit 1) = 1020mm

Total
 Ground Floor = 558 persons to escape
 Mezzanine Floor = 252 persons to escape
 Total = 810 persons to escape

Based on N/A of 1355 sqft, the Puregym maximum peak occupancy target = 254 persons

Sprinklers
 System design and installed in compliance with BS EN 18845:2016 & LPE-Technical Bulletin specifications.
 Fire Alarm
 Fire Alarm designed and installed to BS 5839. Smoke & heat detection / emergency lighting by specialist. Please refer to M&E engineer's drawings / specifications.

Escape Lighting
 Emergency escape lighting designed and installed in accordance with BS 5266. Part 1. Please refer to M&E Engineer's drawings for final layout and specification.

Smoke Extract
 Smoke Extract System to be designed and installed in accordance with BS 7340: Part 6. Please refer to M&E Engineer's drawings for final layout and specifications.

Escape Signage and emergency lighting is G08 under the M&E specifications. Details of contractors proposals to be provided to Building Control Approved Inspector and Fire Officer within the Contractors Proposals Package - Clause 14.

Rev	Date	Description	Drawn/Checked
C01	31.05.23	Changing rooms revised to new Grid.	SK/WLT
C00	28.04.23	Issued for construction	SK/WLT

PROJECT TITLE	Redditch Relocation	DRAWING TITLE	Fire Evacuation Plan Ground and Mezzanine Floor Plans
PROJECT ADDRESS	Unit X1, Washford Mills, Redditch Parkway, Worcester, B98 8DU	SCALE	AS SHOWN
DATE	19.04.23	SCALE	1:100 @ A1
SKWT	19.04.23	SCALE	1:100 @ A1
DRAWING PURPOSE	CONSTRUCTION	NO.	2169
		REV	003-FEP

Pure Gym Ltd
 Town Centre House
 The Merrion Centre
 Leeds
 LS2 8LY
 e: architecture@puregym.com
 t: 0113 285 8787
 w: www.puregym.com