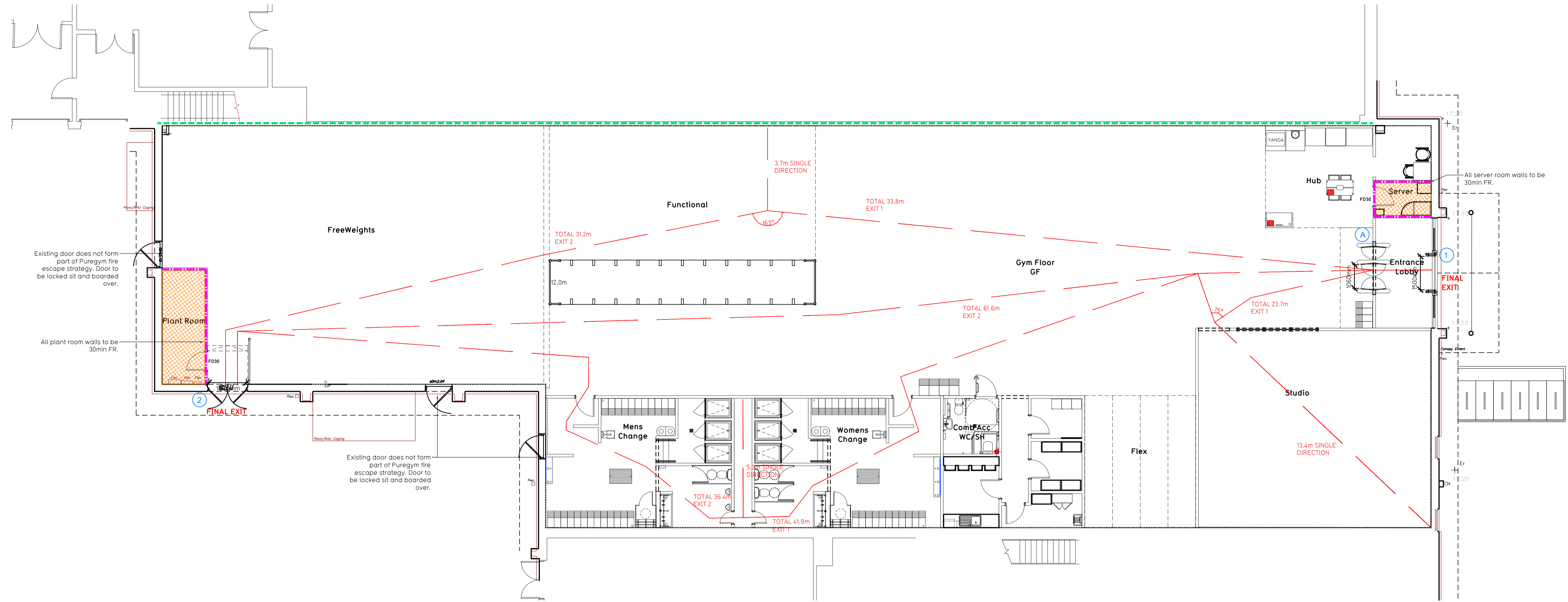
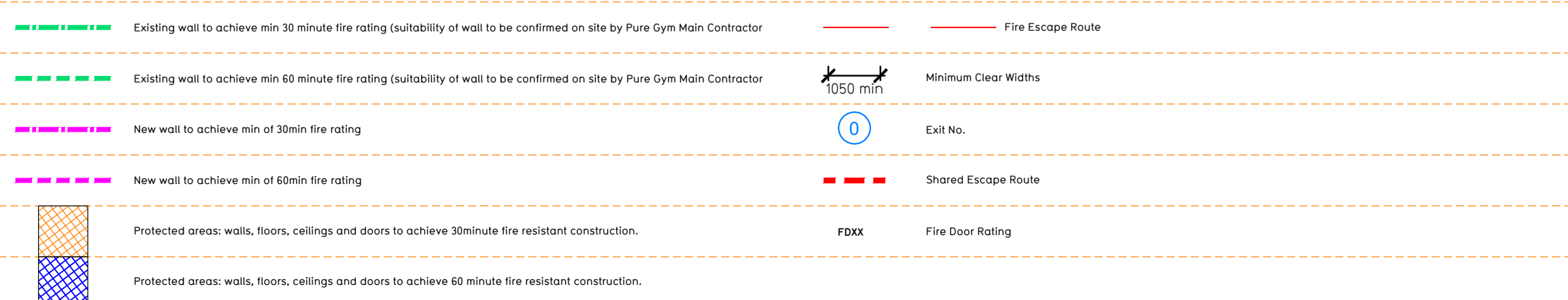


- NOTE:
- Proposals must comply with all acoustic, fire & building regulation requirements
  - No dimensions are to be scaled from this drawing. The contractor is responsible for checking all dimensions on site



Fire Evacuation Key



**Escape Route Widths:**  
 In line with Sections 3.21 & 3.22 of 'Approved Document Part B, Volume 2 - buildings other than dwellings' - the adjacent calculations provide justification for the clear opening widths for escape from each floor level/ room in accordance with Table 4 & Appendix C.

**Ground Floor**  
 Final Exit 1 Limited by Storey Exit A Clear Opening Width = 1060mm (allows 222 persons to escape)  
 Final Exit 2 Clear Opening Width = 850mm (allows 348 persons to escape, largest opening to be discounted)  
 Total Aggregate Width for Floor (Less Largest Opening Width of 850mm from FINAL EXIT 2) = 1000mm

**Total**  
 Ground Floor = 222 persons to escape

Based on NIA of 9947sqft, the Puregym Peak Occupancy Target = 171 Persons  
 Calculated using Puregym Fire Safety Occupancy Levels Forecast Tool.

The design occupancy of the unit as calculated would allow a max. No. of 222 persons to escape, which is larger than the total estimated occupancy capacity of 171 persons and is therefore thought to meet with the 'Approved Document Part B'

**Fire Alarm**  
 Fire Alarm designed and installed to BS 5839. Smoke & heat detection / emergency lighting by specialist. Please refer to M&E engineer's drawings / specifications.

**Escape Lighting**  
 Emergency escape lighting designed and installed in accordance with BS 5266: Part 1. Please refer to M&E Engineer's drawings for final layout and specification.  
 Escape Signage and emergency lighting is CDP under the M&E specification. Details of contractors proposals to be provided to Building Control Approved Inspector and Fire Officer within the Contractors Proposals Package, Clause 1.4

Rev	Date	Description	Drawn/ Checked
C01	31.03.23	Acoustic underlays updated.	HB

PROJECT TITLE		DRAWING TITLE	
Byfleet Unit 3, Wey RP, Royston Road, Byfleet, KT14 7NP		Fire Evacuation Plan Ground Floor	
DRAWING NO.	DATE	SCALE	ISS. No.
KMC:HB	31.03.23	1:100 @ A1	2221
DRAWING PURPOSE			003-FEP
CONSTRUCTION			Rev
			C01

Pure Gym Ltd  
 Town Centre House  
 The Merrion Centre  
 Leeds  
 LS2 8LY  
 e: architecture@puregym.com  
 t: 0113 285 8787  
 w: www.puregym.com