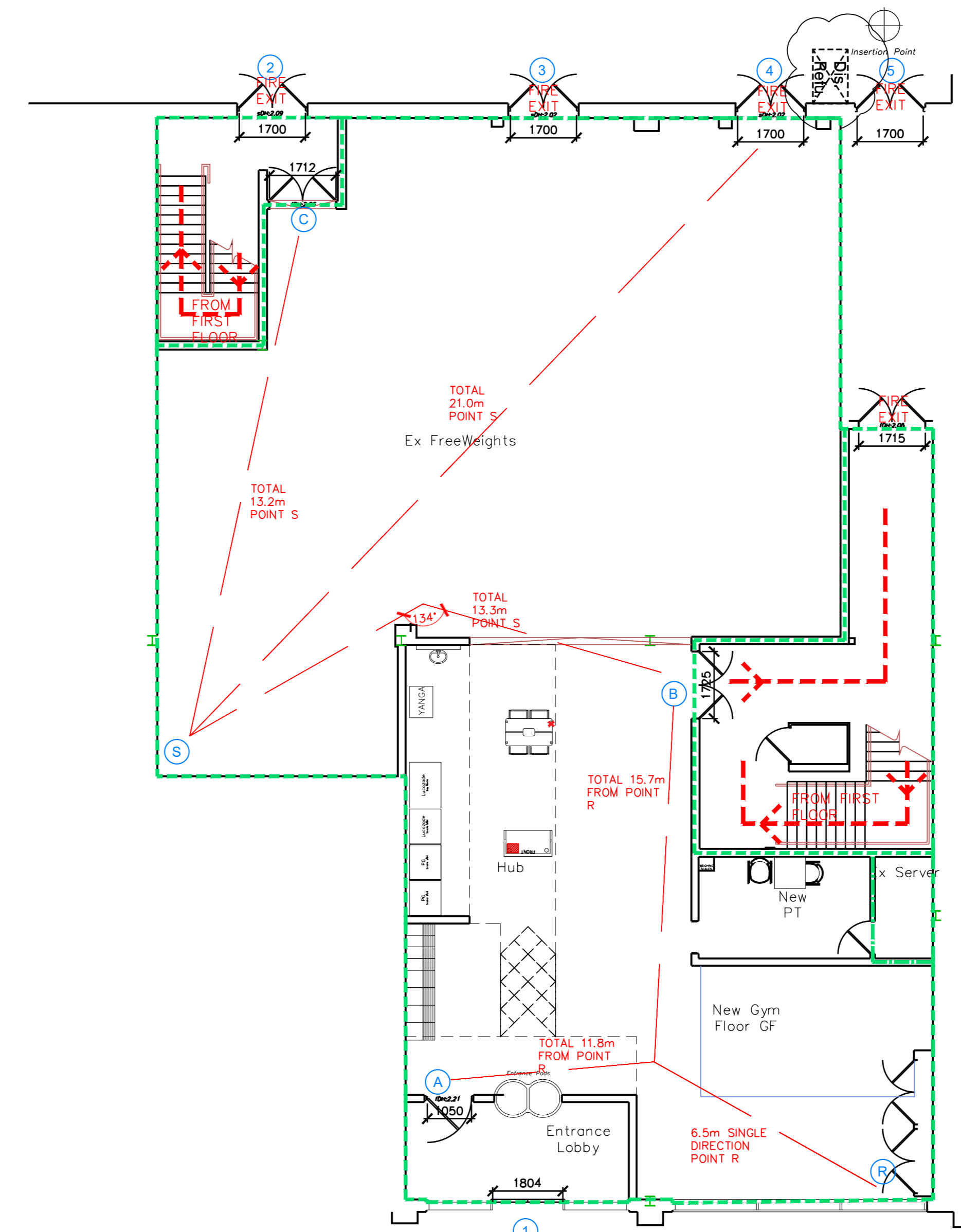
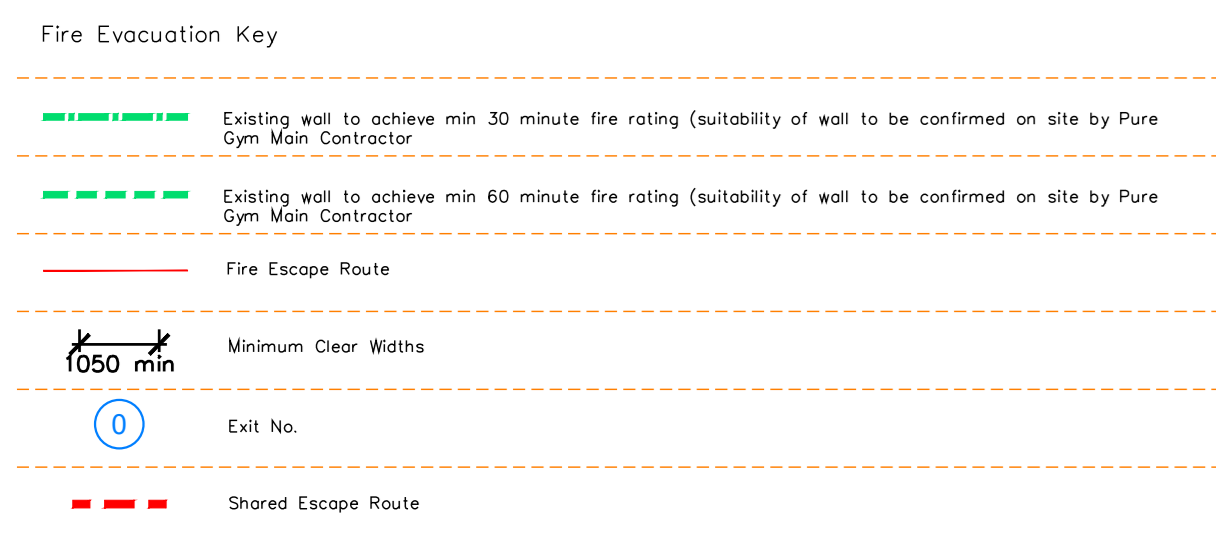


Proposed First Floor Plan



Proposed Ground Floor Plan



Nottingham Beeston Corporation - FFR RFD ONLY Note - fire escape storeroom remains as existing.

Escape Route Widths:
 In line with Sections 3.21 & 3.22 of 'Approved Document Part B, Volume 2 - buildings other than dwellings' - the adjacent calculations provide justification for the clear opening widths for escape from each floor level/room in accordance with Tables A & Appendix C.

Shared Escape:
 Fire Exit 1 Clear Opening Width = 1844mm (allows 376 persons to escape) but is restricted by Intermediate Fire Exit A Clear Opening Width = 1700mm (allows 350 persons to escape)
 Fire Exit 2 Clear Opening Width = 1700mm (allows 350 persons to escape)
 Fire Exit 3 Clear Opening Width = 1700mm (allows 350 persons to escape)
 Fire Exit 4 Clear Opening Width = 1700mm (allows 350 persons to escape)
 Fire Exit 5 Clear Opening Width = 1700mm (allows 350 persons to escape)
 (Clear opening to be discussed)

Exit Door:
 Fire Exit 2 Door by Storey Exit E. Clear Opening Width = 1700mm (allows 350 persons to escape)
 Fire Exit 3 Door by Storey Exit D. Clear Opening Width = 1685mm (allows 347 persons to escape)
 Fire Exit 4 Door by Storey Exit D. Clear Opening Width = 1685mm (allows 347 persons to escape)
 (Clear opening to be discussed)

Total:
 Ground Floor = 376 persons to escape
 First Floor = 350 persons to escape
 Total = 726 persons to escape

Based on a MS of 18.74sqm, the PureGym peak Occupancy Target = 265 Persons
 Calculated using Puragym Fire Safety Occupancy Levels Forecast Tool.

The designed occupancy of the unit as calculated would show a max. No. of 180 persons to escape, which is larger than the total maximum occupancy capacity of 265 persons and so therefore through to meet with the Approved Document Part B. To allow free movement between the floors the occupancy has not been set 50/50S but rather allow for occupancy based on gym stations and functions assuming that a high percentage of the total occupancy could be on a single floor at one time.

Fire Alarm:
 Fire Alarm designed and installed to BS 5839. Smoke & heat detection / emergency lighting by specialist. Please refer to M&E Engineer's drawings / specifications.

Escape Lighting:
 Emergency escape lighting designed and installed in accordance with BS 5266: Part 1. Please refer to M&E Engineer's drawings for fire layout and specification.

(Enable Storage and emergency lighting to CDF under the M&E specification. Details of contractors proposals to be provided to Building Control Approved Inspector and Fire Officer within the Contractors Proposals Package, Clause 1.4 (urgent opening to be discussed))

Rev	Date	Description	Drawn/Checked
01	08/02/2023	Initial Issue	
02	11/02/2023	Revised	

Nottingham Beeston Refurb
 The Square Shopping Ctr. NS5 2JZ

Fire Escape Plan
 Ground and First Floor Plans

CONSTRUCTION

PUREGYM

Pure Gym Ltd
 Town Centre House
 The Merrion Centre
 Leeds
 LS2 8LY
 www.puregym.com
 t: 0113 266 9197
 www.puregym.com