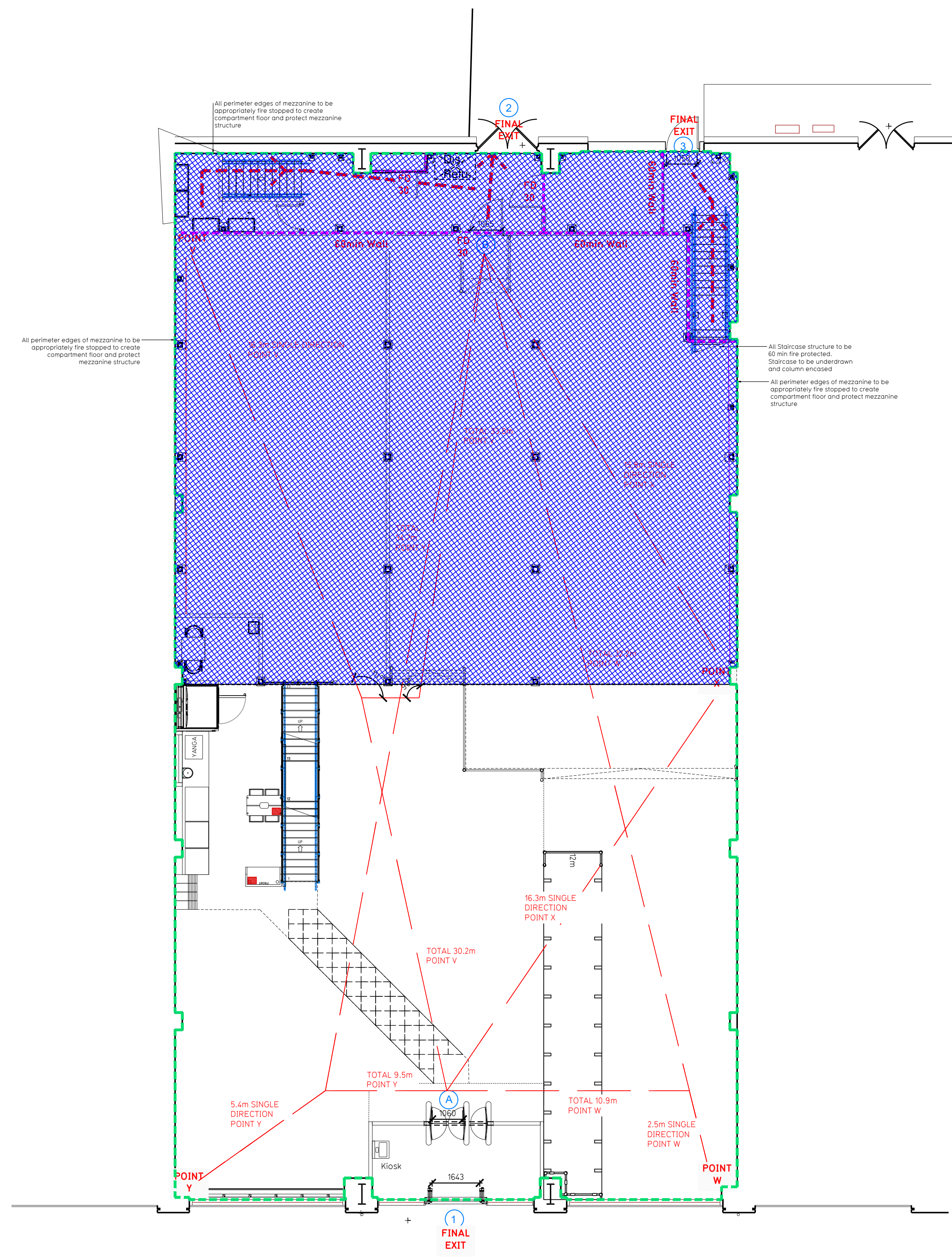
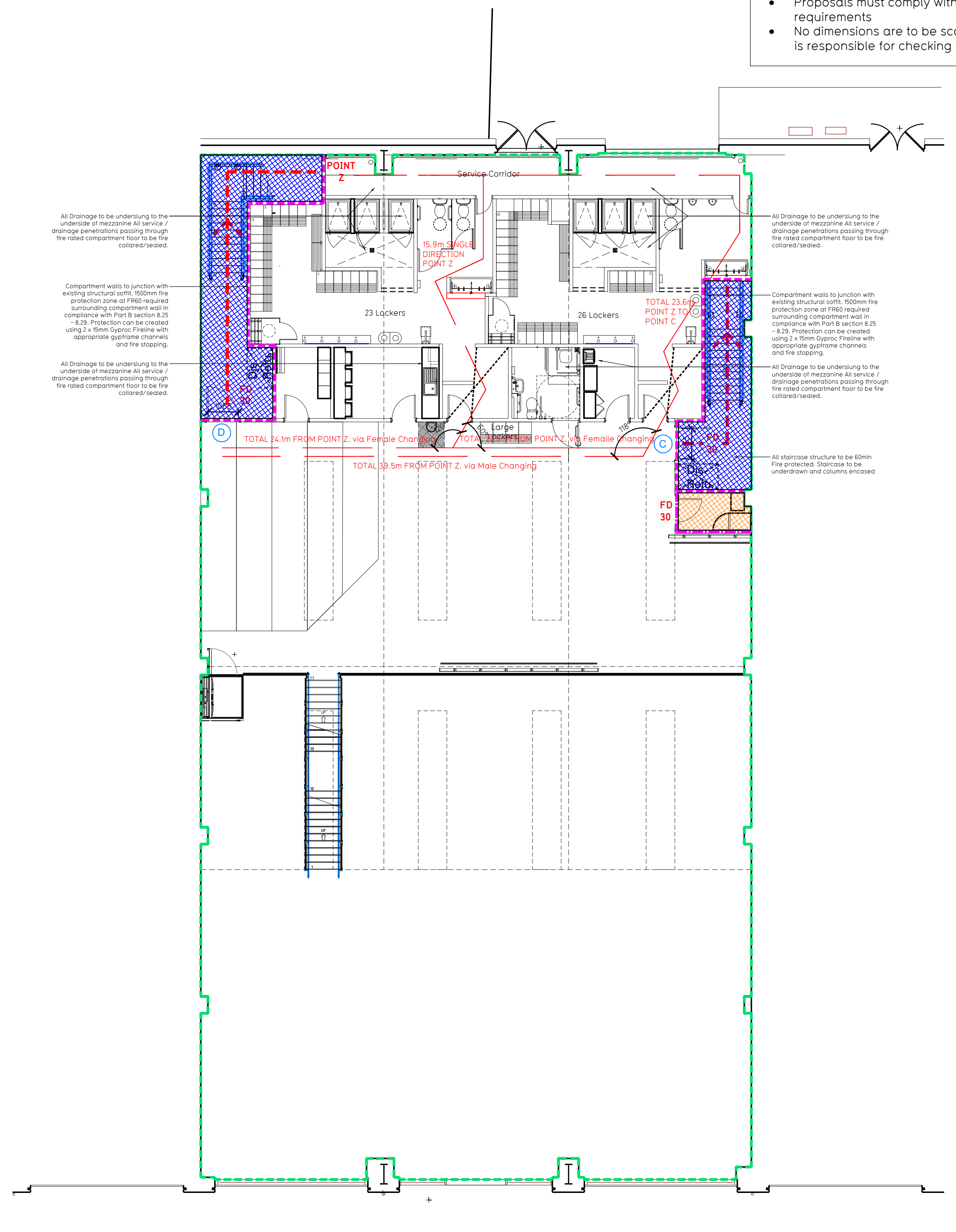


NOTE:

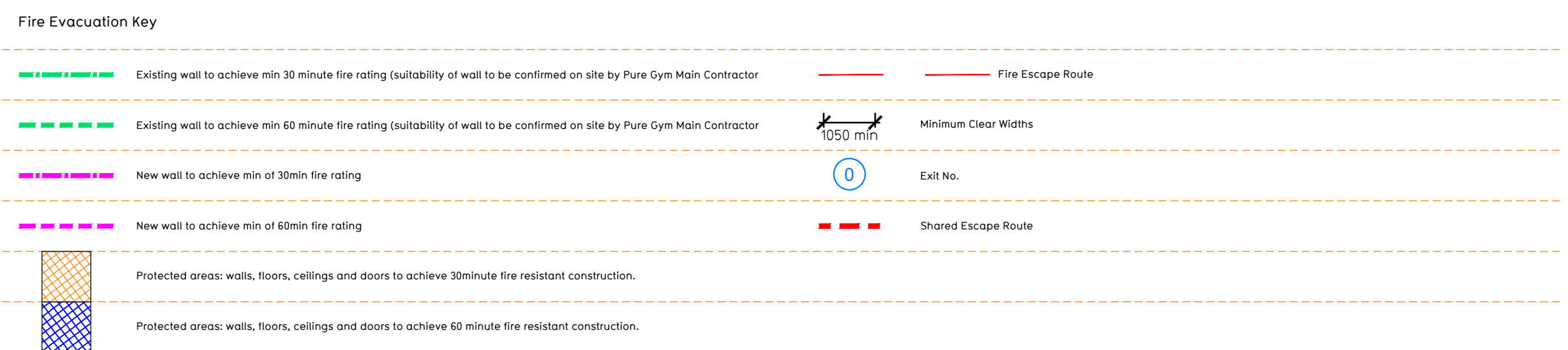
- Proposals must comply with all acoustic, fire & building regulation requirements
- No dimensions are to be scaled from this drawing. The contractor is responsible for checking all dimensions on site



Proposed Ground Floor Plan



Proposed Mezzanine Floor Plan



Z06 Consett - Calculation - TO CHECK

Escape Route Widths:  
In line with Sections 3.21 & 3.22 of 'Approved Document Part B, Volume 2 - buildings other than dwellings' - the adjacent calculations provide justification for the clear opening widths for escape from each floor level/ room in accordance with Table 4.5 Appendix C.

**Ground Floor**  
 Final Exit 1 Clear Opening Width = 1643mm (allows 338 persons to escape)  
 Final Exit 2 Clear Opening Width = 1949mm (allows 339 persons to escape) (largest opening to be discounted)  
 Final Exit 1 Fed by Exit A. Clear Opening Width = 1060mm (allows 222 persons to escape)  
 Total Aggregate Width for Floor (Less Largest Opening Width of 1949mm from FINAL EXIT 2) = 1351mm

**Mezzanine Floor**  
 Final Exit 3 Fed by Storey Exit C. Clear Opening Width = 1065mm (allows 223 persons to escape)  
 Final Exit 2 Fed by Storey Exit B. Clear Opening Width = 1065mm (allows 223 persons to escape) (largest opening to be discounted)  
 Total Aggregate Width for Floor (Less Largest Opening Width of 1065mm from STOREY EXIT C) = 1065mm

**Total**  
 Ground Floor = 280 persons to escape  
 Mezzanine Floor = 173 persons to escape  
**Total = 503 persons to escape**

Based on a NIA of 10,416sqm, the Puregym peak Occupancy Target = 176 Persons  
 Calculated using Puregym Fire Safety Occupancy Levels Forecast Tool.

The designed occupancy of the unit as calculated would allow a max. No. of 503 persons to escape, which is larger than the total estimated occupancy capacity of 176 persons and is therefore thought to meet with the Approved Document Part B. To allow free movement between the floors the occupancy has not been split 50/50% but rather allows for occupancy based on gym stations and functions assuming that a high percentage of the total occupancy could be on a single floor at one time.

**Fire Alarm**  
 Fire Alarm designed and installed to BS 5819. Smoke & heat detection / emergency lighting by specialist. Please refer to MSE engineer's drawings / specifications.

**Escape Lighting**  
 Emergency escape lighting designed and installed in accordance with BS 5266: Part 1. Please refer to MSE Engineer's drawings for final layout and specifications.  
 Escape Signage and emergency lighting is CDP under the MSE specification. Details of contractors proposals to be provided to Building Control Approved Inspector and Fire Officer within the Contractors Proposals Package, Clause 1.4

Rev	Date	Description	Drawn/Checked
001	08.08.22	Issue for Construction	

**PROJECT TITLE**  
 Consett Unit 2B Hermon Retail Park, Consett, Durham, DH8 5RE

**DRAWING TITLE**  
 Fire Evacuation Plan Ground and Mezzanine Floor Plans

**DATE**  
 08.08.22

**SCALE**  
 1:100 @ A1

**NO. SHEETS**  
 2136

**DRAWING No.**  
 003-FEP

**DRAWING PURPOSE**  
 CONSTRUCTION

**Rev**  
 C00

**PUREGYM**

Pure Gym Ltd  
 Town Centre House  
 The Merrion Centre  
 Leeds  
 LS2 8LY

e: architecture@puregym.com  
 t: 0113 285 8787  
 w: www.puregym.com