

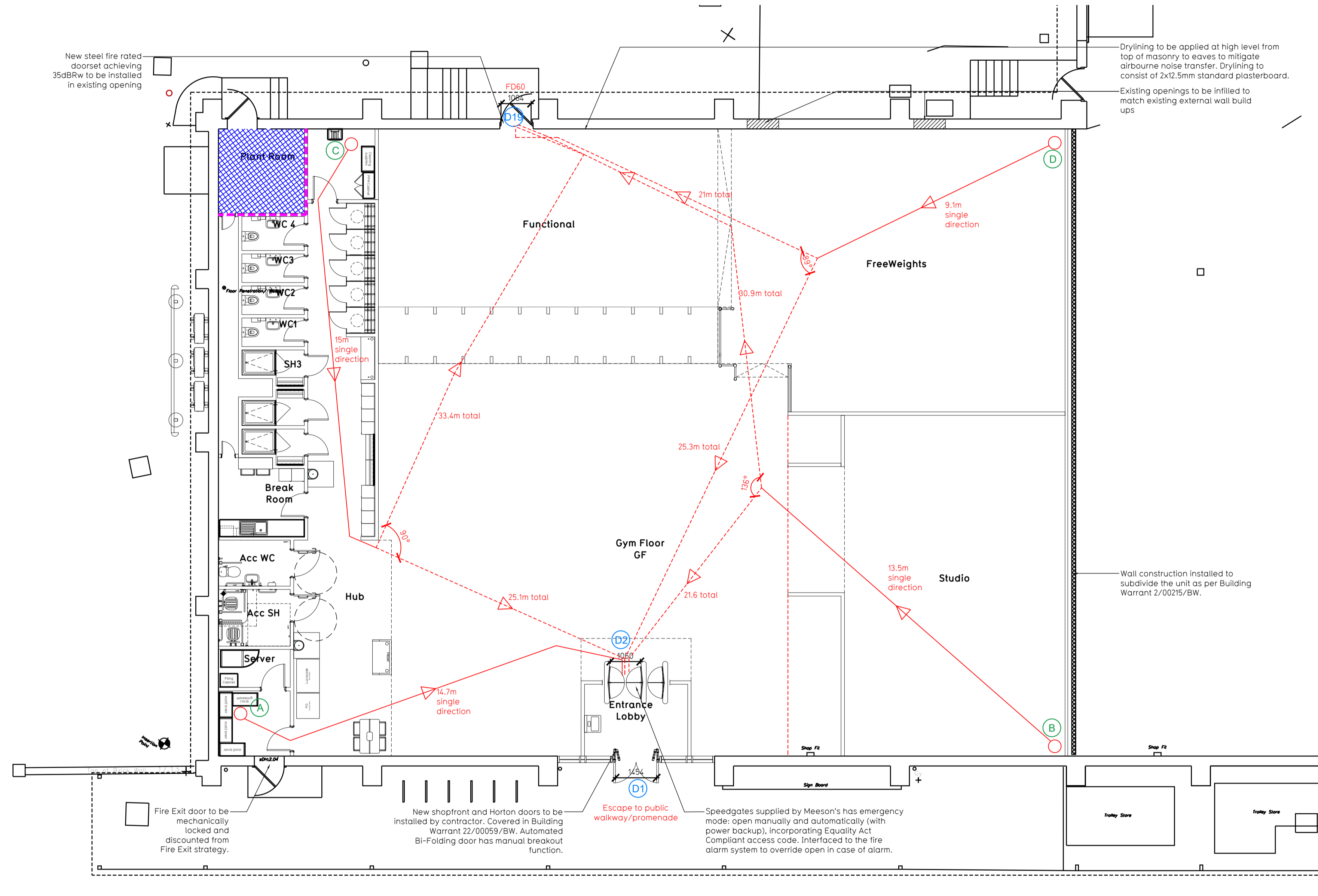
- NOTE:
- Proposals must comply with all acoustic, fire & building regulation requirements
 - No dimensions are to be scaled from this drawing. The contractor is responsible for checking all dimensions on site

Escape Route Widths
 In line with Section 2.9.8 of the Technical Handbook - Non Domestic, the aggregate unobstructed width in mm of all escape routes from a room, or storey, should be at least 5.3 x the occupancy capacity of the room or storey.

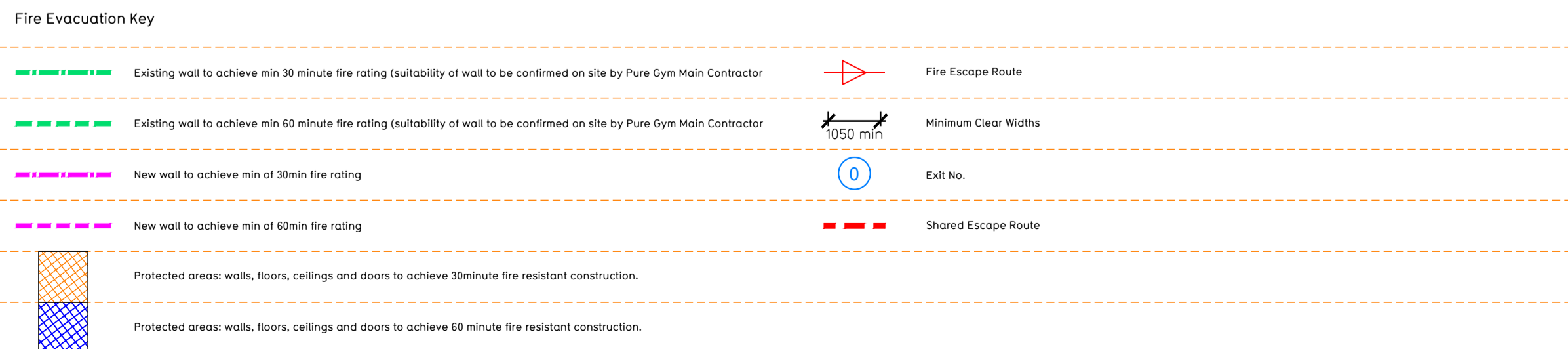
Ground Floor
 Aggregate Clear Opening Width of Escape Routes Calculation:
 Final Fire Exit D2, clear opening width = 1064mm
 Final Fire Exit D19, clear opening width = 1064mm
 Total Aggregate Width for Ground Floor 2114mm (Less Largest Opening Width 1064mm from Fire Exit D19) = 1050mm
 Ground Floor Maximum Occupancy Capacity = 1050 / 5.3 = 198 people
 The maximum escape capacity of the Ground Floor = 198 persons. The target occupancy of the gym is 70 persons based on the sanitary provisions and is therefore thought to meet with Section 2.9.8 of the Technical Handbook.

Escape Distance and Angle of Divergence

- Position A**
 Total escape distance to nearest Final Exit 1 = 14.7m
 This is less than maximum travel distance of 15m thus complies
- Position B**
 Total escape to nearest Final Exit 1 = 21.6m
 Distance before divergence is 13.5m
 A.O.D to be > (2.5 X 13.5) + 45 = 78.7°
 Drawn A.O.D = 136° thus complies
- Position C**
 Total escape to nearest Final Exit 1 = 25.1m
 A.O.D to be > (2.5 X 15) + 45 = 82.5°
 Drawn A.O.D = 90° thus complies
- Position D**
 Total escape to nearest Final Exit D19 = 21m
 Distance before divergence is 9.1m
 A.O.D to be > (2.5 X 9.1) + 45 = 67.7°
 Drawn A.O.D = 88° thus complies



Ground Floor Plan



Sprinklers
 System design and installed in compliance with BS EN 12845:2015 & LPC Technical Bulletins

Fire Alarm
 Fire Alarm designed and installed to BS 5839. Smoke & heat detection / emergency lighting by specialist. Please refer to M&E engineer's drawings / specifications.

Escape Lighting
 Emergency escape lighting designed and installed in accordance with BS 5266: Part 1. Please refer to M&E Engineer's drawings for final layout and specification.

Smoke Extract
 Smoke EXTRACT System to be designed and installed in accordance with BS 7346: Part 8. Please refer to M&E Engineer's drawings for final layout and specification.

Escape Signage and emergency lighting is CDP under the M&E specification. Details of contractors proposals to be provided to Building Control Approved Inspector and Fire Officer within the Contractors Proposals Package, Clause 1.4

T01 13.06.22 Updates following underlay amends		SK/KL
Rev	Date	Description
PROJECT TITLE		DRAWING TITLE
Alloa Unit 1, Candleriggs Road, Alloa FK10 1EA		Fire Evacuation Plan Ground Floor Plan
DRAWING CHECKED	DATE	SCALE
SK/IR	16.05.22	1:100 @ A1
DRAWING No.	1061	DRAWING No.
003-FEP		
DRAWING PURPOSE		Rev
CONSTRUCTION		C00

PUREGYM

Pure Gym Ltd
 Town Centre House
 The Merrion Centre
 Leeds
 LS2 8LY

e: architecture@puregym.com
 t: 0113 285 8787
 w: www.puregym.com