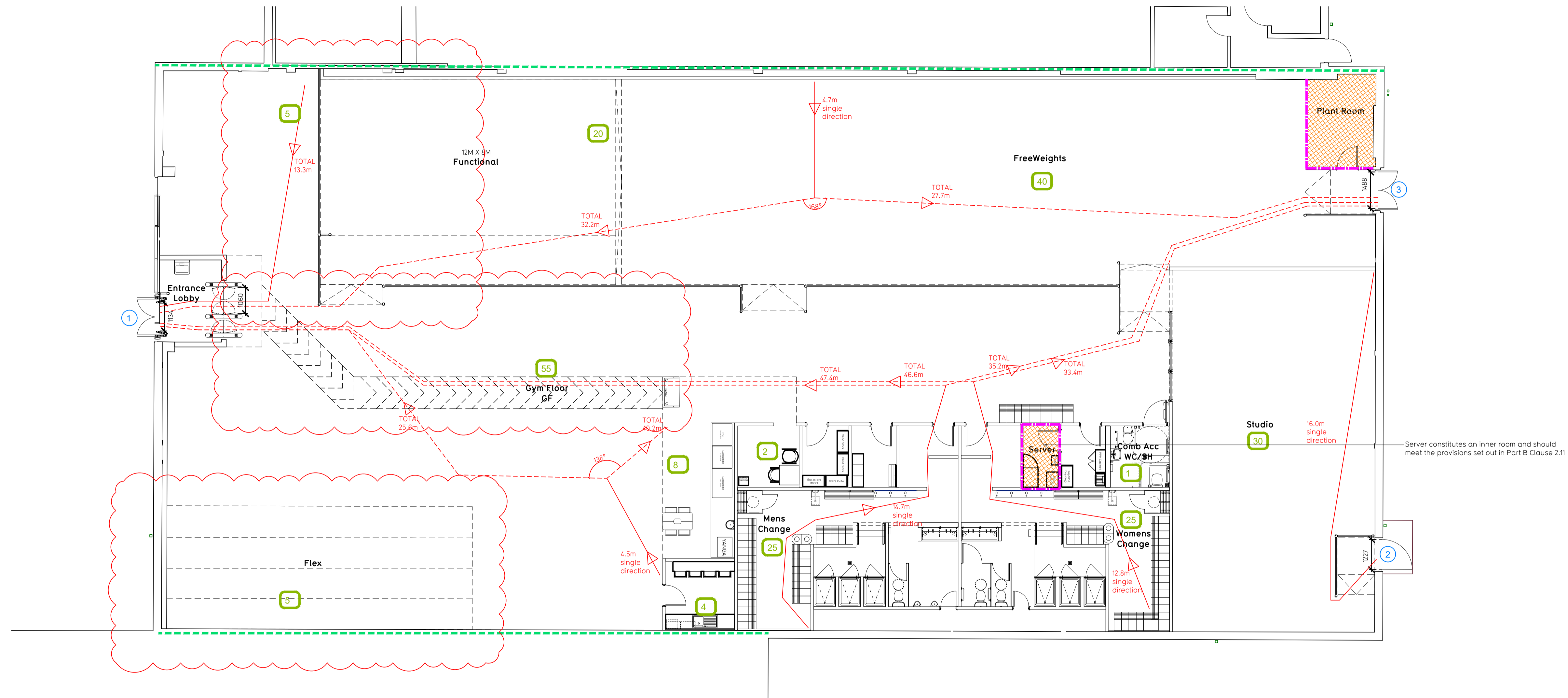


NOTE:

- Proposals must comply with all acoustic, fire & building regulation requirements
- No dimensions are to be scaled from this drawing. The contractor is responsible for checking all dimensions on site



**Fire Evacuation Key**

	Existing wall to achieve min 30 minute fire rating (suitability of wall to be confirmed on site by Pure Gym Main Contractor)		Occupancy level within area
	Existing wall to achieve min 60 minute fire rating (suitability of wall to be confirmed on site by Pure Gym Main Contractor)		Fire Escape Route
	New wall to achieve min of 30min fire rating		Minimum Clear Widths
	New wall to achieve min of 60min fire rating		Exit No.
	Protected areas: walls, floors, ceilings and doors to achieve 30minute fire resistant construction.		Shared Escape Route
	Protected areas: walls, floors, ceilings and doors to achieve 60 minute fire resistant construction.		

**Escape Route Widths:**  
 In line with Sections 3.21 & 3.22 of 'Approved Document Part B, Volume 2 - buildings other than dwellings' - the adjacent calculations provide justification for the clear opening widths for escape from each floor level/ room in accordance with Table 4 & Appendix C.

**Ground Floor**  
 EXIT 1 Clear Opening Width = 1060mm (allows 222 persons to escape)  
 EXIT 2 Clear Opening Width = 127mm (allows 215 persons to escape)  
 EXIT 3 Clear Opening Width = 1488mm (Largest opening to be discounted)

Total Aggregate Width for Floor (Less Largest Opening Width of 1488mm from EXIT NO.3) = 2287mm  
 Ground Floor Total Estimated Peak Occupancy Capacity = 290 Persons

EXIT NO. 162 provides a min. width of 2287 mm and would allow a max. No. of 477 persons to escape, which is larger than the total estimated peak occupancy capacity of 290 Persons and is therefore thought to meet with the Approved Document Part B.

**Fire Alarm**  
 Fire Alarm designed and installed to BS 5839. Smoke & heat detection / emergency lighting by specialist. Please refer to M&E engineer's drawings / specifications.

**Escape Lighting**  
 Emergency escape lighted designed and installed in accordance with BS 5266: Part 1. Please refer to M&E Engineer's drawings for final layout and specification. Escape Signage and emergency lighting is CDP under the M&E specification. Details of contractors proposals to be provided to Building Control Approved Inspector and Fire Officer within the Contractors Proposals Package. Clause 1.4

Rev	Date	Description	Drawn/Checked

<b>PROJECT TITLE</b>		<b>DRAWING TITLE</b>	
faunton Riverside RP, Taunton, TA1 2LR		Fire Escape Plan Ground Floor	
<b>DRAWN BY</b>	<b>DATE</b>	<b>SCALE</b>	<b>ISS. NO.</b>
HI/CS	31.08.21	1:100 @ A1	2034
<b>DRAWING PURPOSE</b>		<b>ISS. NO.</b>	<b>DRAWING No.</b>
CONSTRUCTION		003-FEP	
		<b>Rev</b>	
			C00

Pure Gym Ltd  
 Town Centre House  
 The Merrion Centre  
 Leeds  
 LS2 8LY  
 e: architecture@puregym.com  
 t: 0113 285 8787  
 w: www.puregym.com