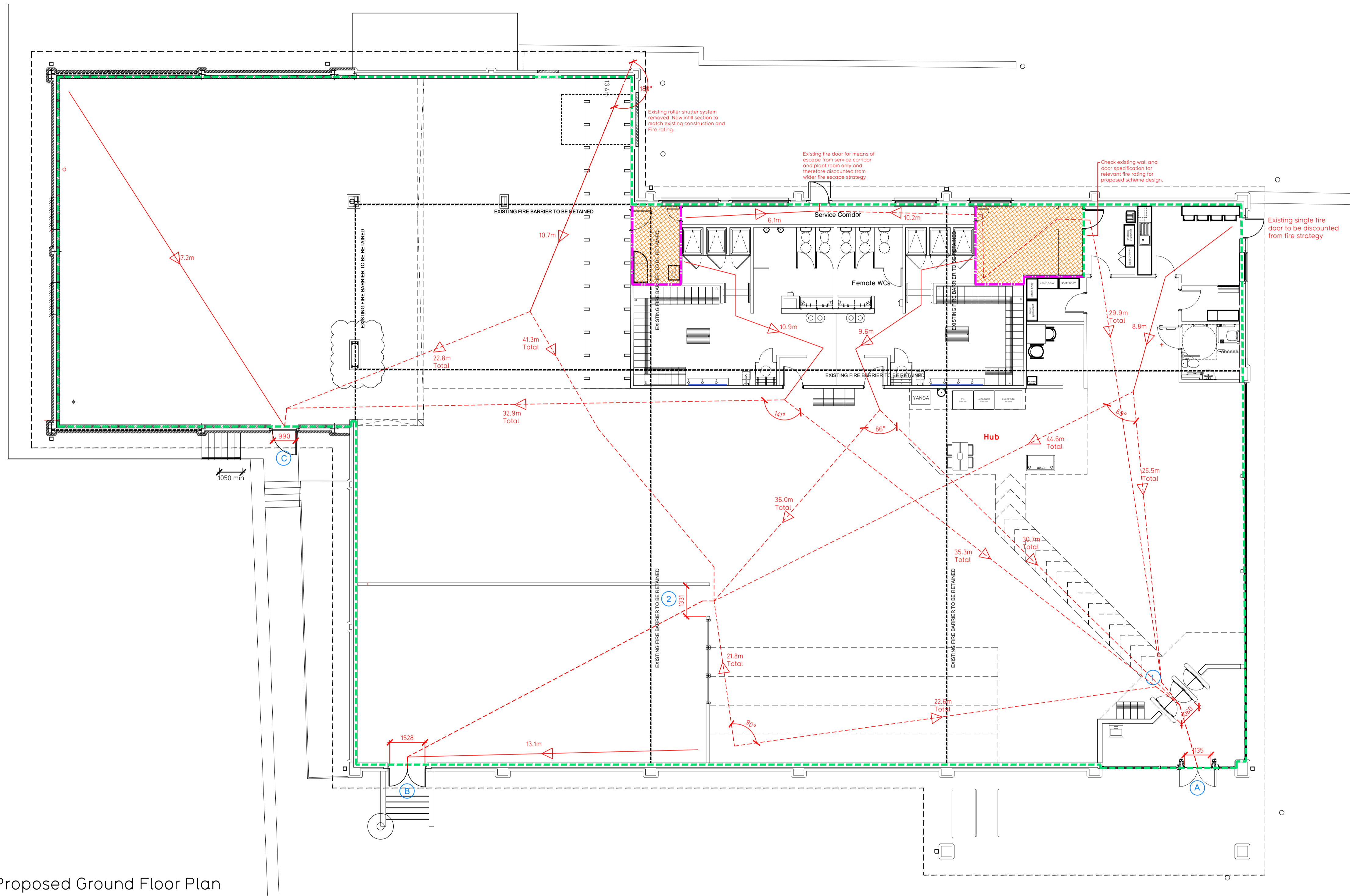


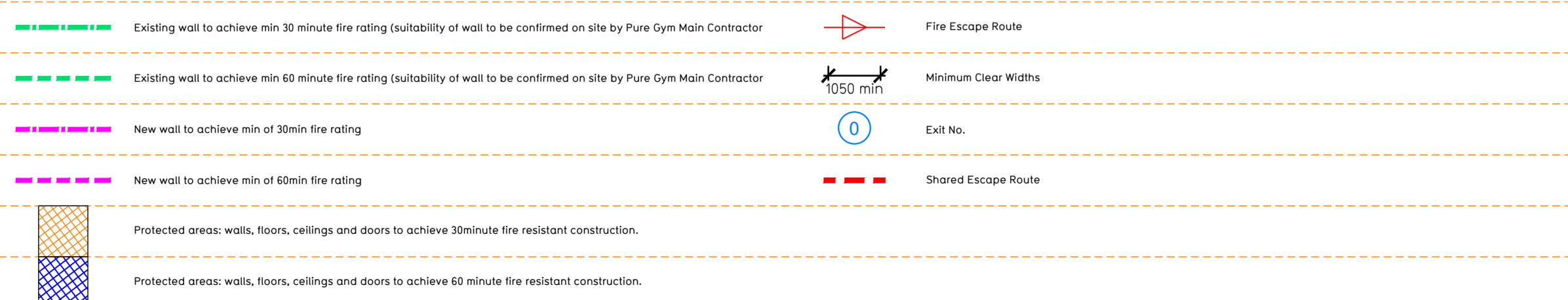
NOTE:

- Proposals must comply with all acoustic, fire & building regulation requirements
- No dimensions are to be scaled from this drawing. The contractor is responsible for checking all dimensions on site



Proposed Ground Floor Plan

Fire Evacuation Key



**Escape Route Widths:**  
 In line with Sections 3.21 & 3.22 of 'Approved Document Part B, Volume 2 - buildings other than dwellinghouses' - the adjacent calculations provide justification for the clear opening widths for escape from each floor level/ room in accordance with Table 4 & Appendix C.

**Ground Floor**  
 Exit A Clear Opening Width = 1060mm (allows 222 persons to escape, limited by clear width at Exit No1)  
 Exit B Clear Opening Width = 528mm (allows 315 persons to escape, largest opening to be discounted)  
 Exit C Clear Opening Width = 920mm (allows 10 persons to escape)

Ground Floor Total Estimated Occupancy Capacity = 194 Persons

Exit A and Exit C provides a combined escape capacity of 332 persons, which is larger than the total estimated occupancy capacity of 194 Persons and is therefore thought to meet with the Approved Document Part B.

**Fire Alarm**  
 Fire Alarm designed and installed to BS 5839. Smoke & heat detection / emergency lighting by specialist. Please refer to M&E engineer's drawings / specifications.

**Escape Lighting**  
 Emergency escape lighted designed and installed in accordance with BS 5266: Part 1. Please refer to M&E Engineer's drawings for final layout and specification.

Escape Signage and emergency lighting is CDP under the M&E specification. Details of contractors proposals to be provided to Building Control Approved Inspector and Fire Officer within the Contractors Proposals Package, Clause 14.

Rev	Date	Description	Drawn/Checked
C02	18.07.22	New column at free weight area	KL/IR
C01	24.06.22	General update based on GA-C01	KL/IR

PROJECT TITLE	Tydesley Fire Evacuation Plan		
PROJECT ADDRESS	Castle Street, Tydesley, Manchester M29 8EW	DRAWING No.	003-FEP
DRAWN	MJI/IR	DATE	20.04.22
SCALE	1:100 @ A1	NO.	2082
DRAWING PURPOSE	CONSTRUCTION	Rev	C02

**PUREGYM**

Pure Gym Ltd  
 Town Centre House  
 The Merrion Centre  
 Leeds  
 LS2 8LY  
 e: architecture@puregym.com  
 t: 0113 285 8787  
 w: www.puregym.com