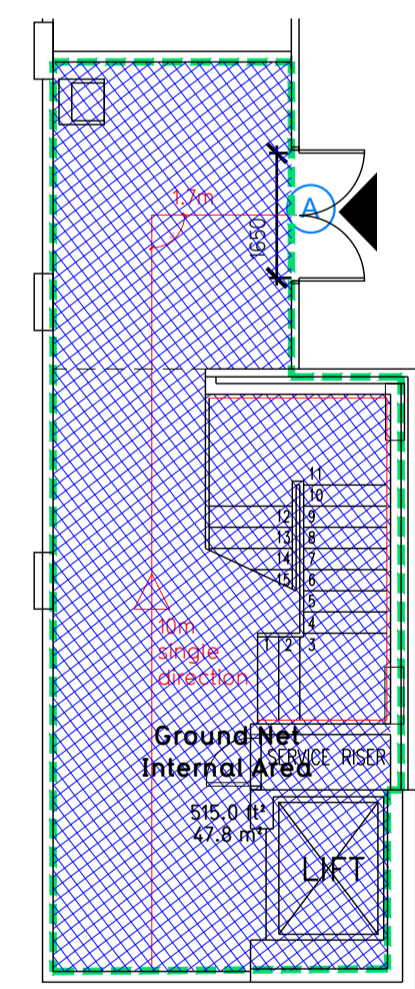
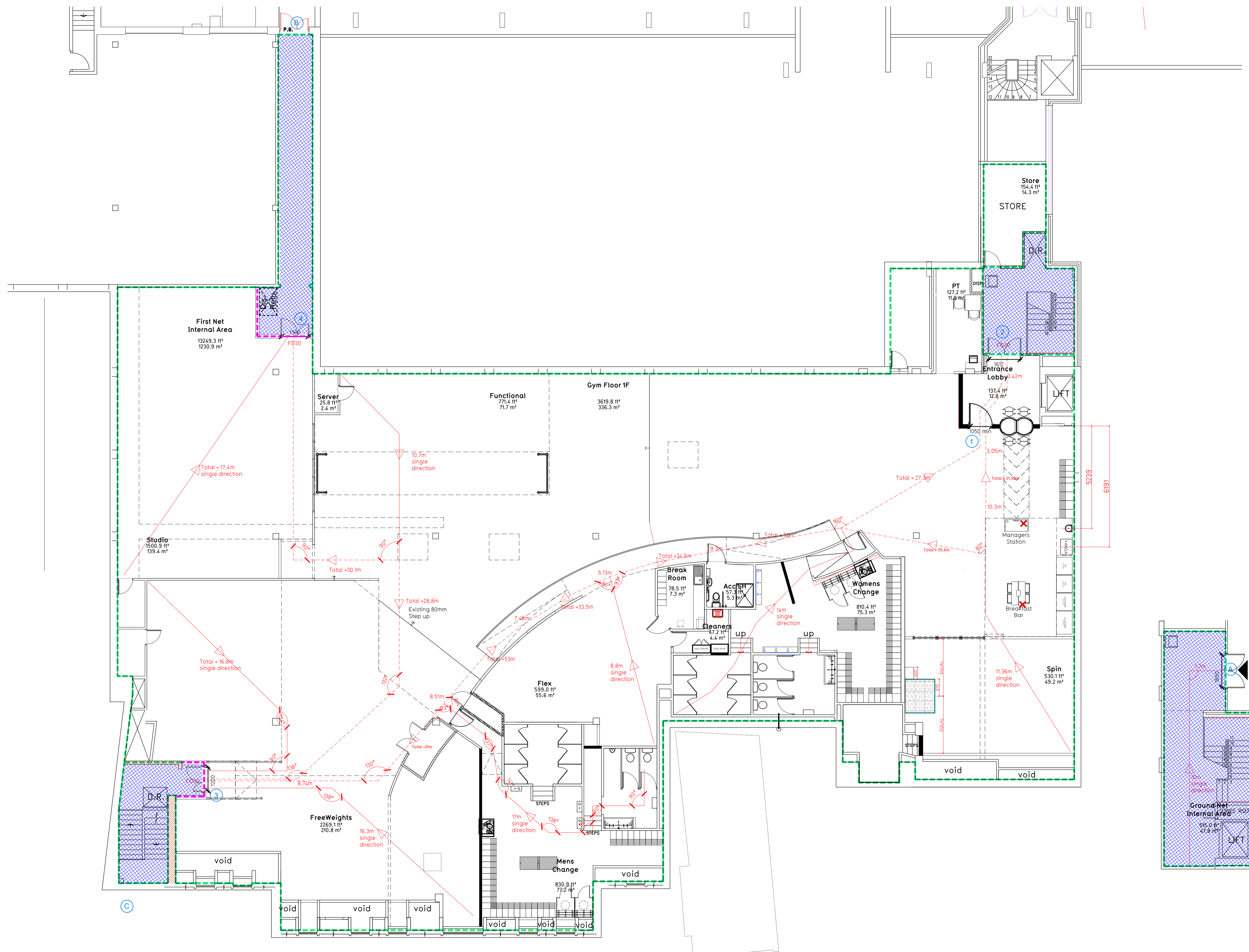


NOTE:

- Proposals must comply with all acoustic, fire, Building Regulation requirements.
- No dimensions are to be scaled from this drawing. The contractor is responsible for checking all dimensions on site.



Fire Evacuation Key

	Existing wall to achieve min 30 minute fire rating (suitability of wall to be confirmed on site by Pure Gym Main Contractor)		Occupancy level within area
	Existing wall to achieve min 60 minute fire rating (suitability of wall to be confirmed on site by Pure Gym Main Contractor)		Fire Escape Route
	New wall to achieve min of 30min fire rating		Minimum Clear Widths
	New wall to achieve min of 60min fire rating		Exit No.
	Protected areas: walls, floors, ceilings and doors to achieve 30minute fire resistant construction.		Shared Escape Route
	Protected areas: walls, floors, ceilings and doors to achieve 60 minute fire resistant construction.		

Escape Route Widths:
 In line with Sections 3.21 & 3.22 of 'Approved Document Part B, Volume 2 - buildings other than dwellings' - the adjacent calculations provide justification for the clear opening widths for escape from each floor level/ room in accordance with Table 4 & Appendix C.

Ground Floor (Entrance Lobby Use Only)
 Final Exit Clear Opening Width (A) = 1650mm
 Ground Floor Total Estimated Occupancy Capacity (limited due to single escape door) = 60 Persons

First Floor
 Exit 1 (Intermediate Clear Opening Width) = 1050mm (allows 220 persons to escape)
 Exit 2 Clear Opening Width = 1612mm (escape width is limited by Exit 1).
 Final Exit Clear Opening Width (A) = 1650mm (escape width is limited by Exit 1).
 Exit 3 Clear Opening Width = 1000mm (allows 250 persons to escape)
 Final Exit Clear Opening Width (B) = 1000mm

Exit 4 (Intermediate Clear Opening Width) = 1360mm (allows 282 persons to escape) (largest opening to be discounted).
 Final Exit Clear Opening Width (B) = 1630mm (escape width is limited by Exits 4 & 5).

First Floor Total Estimated Occupancy Capacity = 470 Persons which is larger than the estimated peak occupancy of 297 persons (based on historic PureGym data) and is therefore thought to meet with the Approved Document Part B.

Fire Alarm
 Fire alarm designed and installed to BS 5839. Smoke & heat detection / emergency lighting by specialist. Please refer to MSE engineer's drawings / specifications.

Escape Lighting
 Emergency escape lighting designed and installed in accordance with BS 5266: Part 1. Please refer to MSE Engineer's drawings for final layout and specification.

Escape Signage and emergency lighting is CDP under the MSE specification. Details of contractors proposals to be provided to Building Control Approved Inspector and Fire Officer within the Contractors Proposals Package, Clause 1.4

Rev	Date	Description	Drawn/Checked

PROJECT TITLE
 London, Epsom - Refurbishment
 102 High St, Epsom, KT19 8BJ

DRAWING TITLE
 Fire Escape Plan
 Ground/First Floor Plans

DRAWING NO.
 003 - FEP - R00

SCALE
 1:100 @ A1

DATE
 15.12.21

DRAWN BY
 MJJ/H/CV

RECORD

PUREGYM

Pure Gym Ltd
 Town Centre House
 The Merrion Centre
 Leeds
 LS2 8LY

e: architecture@puregym.com
 t: 0113 285 8787
 w: www.puregym.com