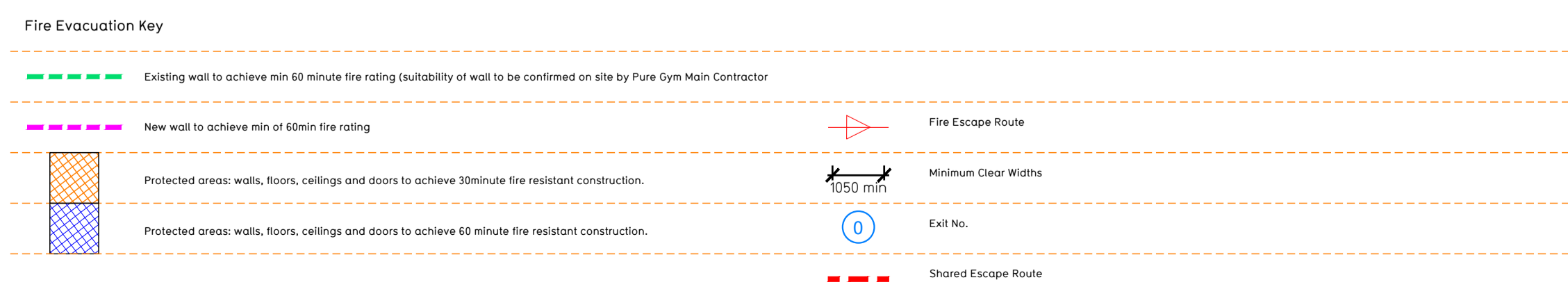
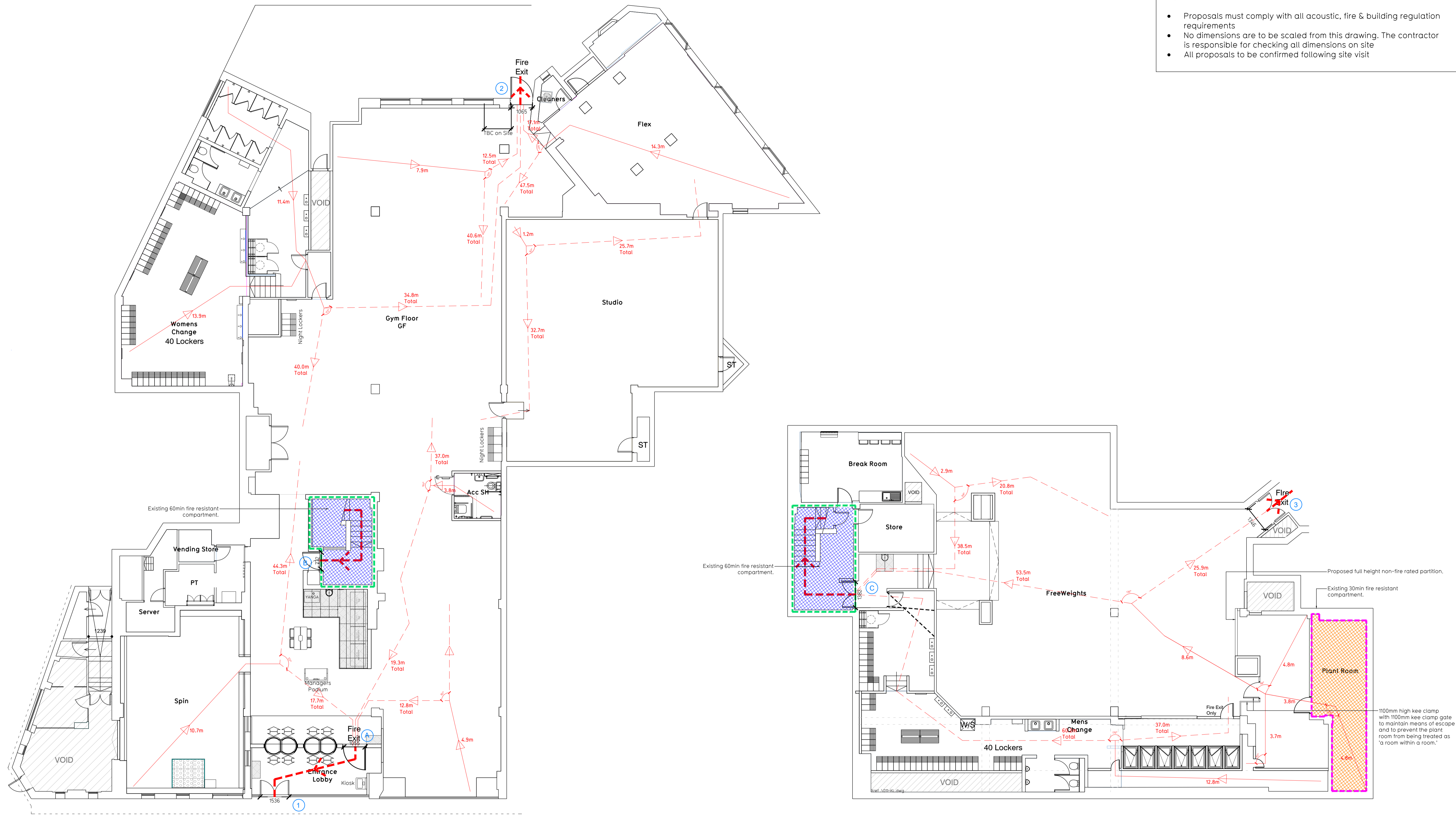


NOTE:

- Proposals must comply with all acoustic, fire & building regulation requirements
- No dimensions are to be scaled from this drawing. The contractor is responsible for checking all dimensions on site
- All proposals to be confirmed following site visit



Escape Route Widths:
 In line with Sections 3.21.3, 3.22 of Approved Document Part B, Volume 2 - buildings other than dwelling houses - the adjacent calculations provide justification for the clear opening widths for escape from each level/room in accordance with Table 4 & Appendix C.

Ground Floor
 Exit 1 (Formal) Clear Opening Width = 1955mm (allows 221 persons to escape)
 Exit 1 (Informal) Clear Opening Width = 1030mm (largest opening discounted and is limited by Exit A)
 Exit 2 Clear Opening Width = 1655mm (allows 223 persons to escape)
 Ground Floor Total Estimated Occupancy Capacity = 444 Persons

Basement
 Exit 3 Clear Opening Width = 1265mm (largest opening discounted)
 Exit 8 (Intermedial) Clear Opening Width = 775mm and would limit the number of persons, allowing a max. No. of 60 persons to escape.

Fire Alarm
 Fire Alarm designed and installed to BS 5833. Smoke & heat detection / emergency lighting by specialist. Please refer to M&E engineer's drawings / specifications.

Escape Lighting
 Emergency escape lighting designed and installed in accordance with BS 5266 Part 1. Please refer to M&E Engineer's drawings for final layout and specification.

Smoke Extract System to be designed and installed in accordance with BS 7346: Part 8. Please refer to M&E Engineer's drawings for final layout and specification.

Rev	Date	Description	Drawn	Checked
01	24.02.2021	SS/ICV	0687	003 - FEP

AS BUILT

Sydenham Refurbishment
 291 Kirkdale, London, SE26 4QD

Fire Evacuation Plan
 Basement & Ground Floor Plans

PUREGYM

Pure Gym Ltd
 Town Centre House
 The Merrion Centre
 Leeds
 LS2 8LY

e: architecture@puregym.com
 t: 0113 265 6737
 w: www.puregym.com